



**A Conference Attendee's Guide  
to the Annual Meeting of the Peace Science Society (International)  
November 2-4, 2017**

**Hosted by Cameron Thies  
with able assistance from Reed Wood and Thorin Wright  
School of Politics and Global Studies  
Arizona State University  
Tempe, Arizona, USA**

## Conference Venue

Tempe Mission Palms  
60 E 5th Street Tempe, AZ 85281  
Phone: 480-894-1400



## Transportation to the hotel

The Tempe Mission Palms provides a complimentary shuttle service from 5:30 am to 10:00 pm. After you collect your baggage at baggage claim, call the hotel at 480-894-1400. The operator will direct you to the curbside location for your terminal and provide an estimated pick-up time. When you need to return to the airport, the shuttle runs every 30 minutes on the hour and half-hour. Reservations are not required.

If you drive to the hotel, onsite and valet parking are included in the hospitality fee.

## Services and Amenities included in the Daily Hotel Hospitality Fee

Airport Transportation, 5:30 am to 10 pm  
Valet and onsite parking  
Wireless Internet  
Fitness Center, 6 am to 10 pm  
Rooftop outdoor heated swimming pool  
Jacuzzis  
Business Center  
Concierge  
Enterprise Rent-A-Car on site

## Wireless Internet Code

Tempe Mission Palms  
SSLD: AVMS-Meeting  
Username: palm  
Password: ballroom

## Location of Events

Most events will be held in the Tempe Mission Palms (see map below).

**Registration** is located in the Ballroom Foyer.

The **panels and most meetings** will be held in the Palm Ballroom area of the Tempe Mission Palms. See the program for specific rooms.

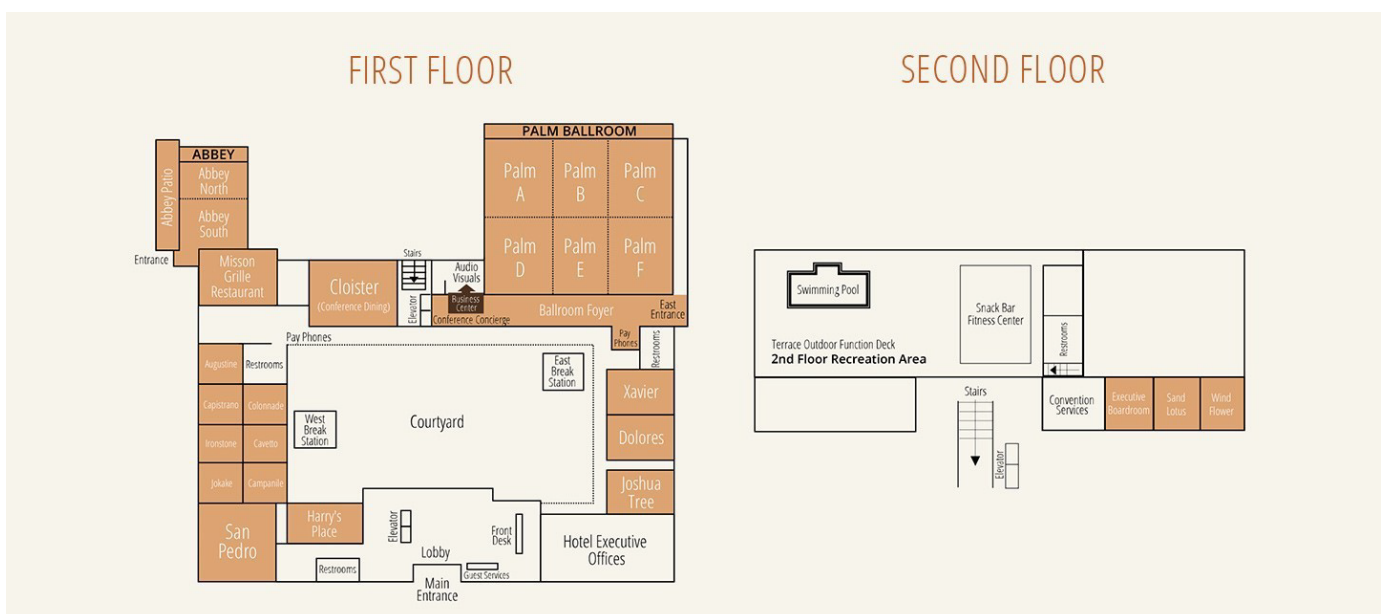
**Coffee Breaks** will be held in the Ballroom Foyer.

The **Poster Session** will be held in the Ballroom Foyer.

The **Reception** will be held on the Terrace Outdoor Function Deck (2nd floor).

**Workshops** will be held in the Memorial Union on the ASU campus.

## Map of the Tempe Mission Palms Hotel



# Map of Memorial Union (MU) on ASU Tempe Campus

The Workshops held on November 2 will be in the Apache, Copper, Chrysocola, Pinal, Plata, Rincon, Santa Cruz, Yavapai, and Yuma rooms on the second floor of the MU.



## Memorial Union Second Floor Room Features

rev. July 2010

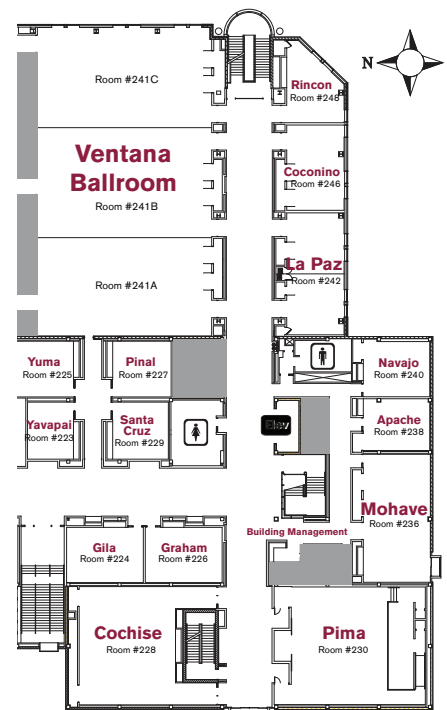
- #202 Alumni Lounge**  
60' x 36', 2160 sq. ft, seats 90 at rounds or individual tables, 120 theatre seating, house sound, ceiling mounted data projector, 8 foot drop down screen, video conferencing equipment
- #206 Copper**  
21 x 14'6", 304 sq. ft, seats 16 at a fixed conference table, 65" wall mounted plasma screen, 2' credenza
- #207 Gold**  
42'6 x 27'6, 1168 square feet, seats 70 at square tables of 4 or theatre style, house sound and ceiling mounted data projector, 8 foot drop down screen, 8 foot credenza
- #208 Chrysocola**  
21' x 14'6, 304 sq. ft, seats 16 at a fixed conference table, 65" wall mounted plasma screen, 2' credenza
- #210 Plata**  
21'6 x 14'6, 311 sq. ft, seats 16 at a fixed conference table, 2' credenza
- #220 Turquoise Ballroom**  
86'6 x 42'6, 3676 sq. ft, seats 180 at rounds, 249 theatre, house sound, 2 ceiling mounted data projectors, 2 10' drop down screens, video conferencing equipment
- #221 Arizona Ballroom**  
118' x 58', 6844 sq. ft, seats 400 at rounds, 575 theatre, house sound, 3 ceiling mounted data projectors, 3 16' drop down screens

- #223 Yavapai**  
16'6 x 20', 330 sq. ft, seats 16 at a fixed conference table, 65" wall mounted plasma screen, 14' credenza
- #224 Gila**  
27'6 x 19'6, 536 sq. ft, seats 30 in a u-shape seating on both sides, 65" wall mounted plasma screen, 8' credenza
- #225 Yuma**  
20'6 x 19'6, 399 sq. ft, seats 25 in a u-shape seating on both sides, 65" wall mounted plasma screen, 14' credenza
- #226 Graham**  
27'6 x 19'6, 536 sq. ft, seats 30 in a u-shape seating on both sides, 65" wall mounted plasma screen, 8' credenza
- #227 Pinal**  
21' x 19'6, 409 sq. ft, seats 24 at individual tables of 6, 65" wall mounted plasma screen, 14' credenza
- #228 Cochise**  
34'6 x 42', 1449 sq. ft, seats 60 at rounds, 72 at individual tables of 6 and 80 theatre, house sound, mounted data projector and 8' drop down screen, 12' credenza
- #229 Santa Cruz**  
20 x 20, 400 sq. ft, seats 25 at u-shape seating on both sides, 65" wall mounted plasma screen, 14' credenza
- #230 Pima Auditorium**  
1449 sq. ft, fixed theatre seating for 152, stage, house sound, rear mounted data projector, 16' drop down screen, video conferencing equipment
- #236 Mohave**  
24' x 45'6, 1092 sq. ft, seats 60 at rounds, 66 at u-shape with seating on both sides and 75 theatre, house sound, ceiling mounted data projector, 8' drop down screen, 10' credenza

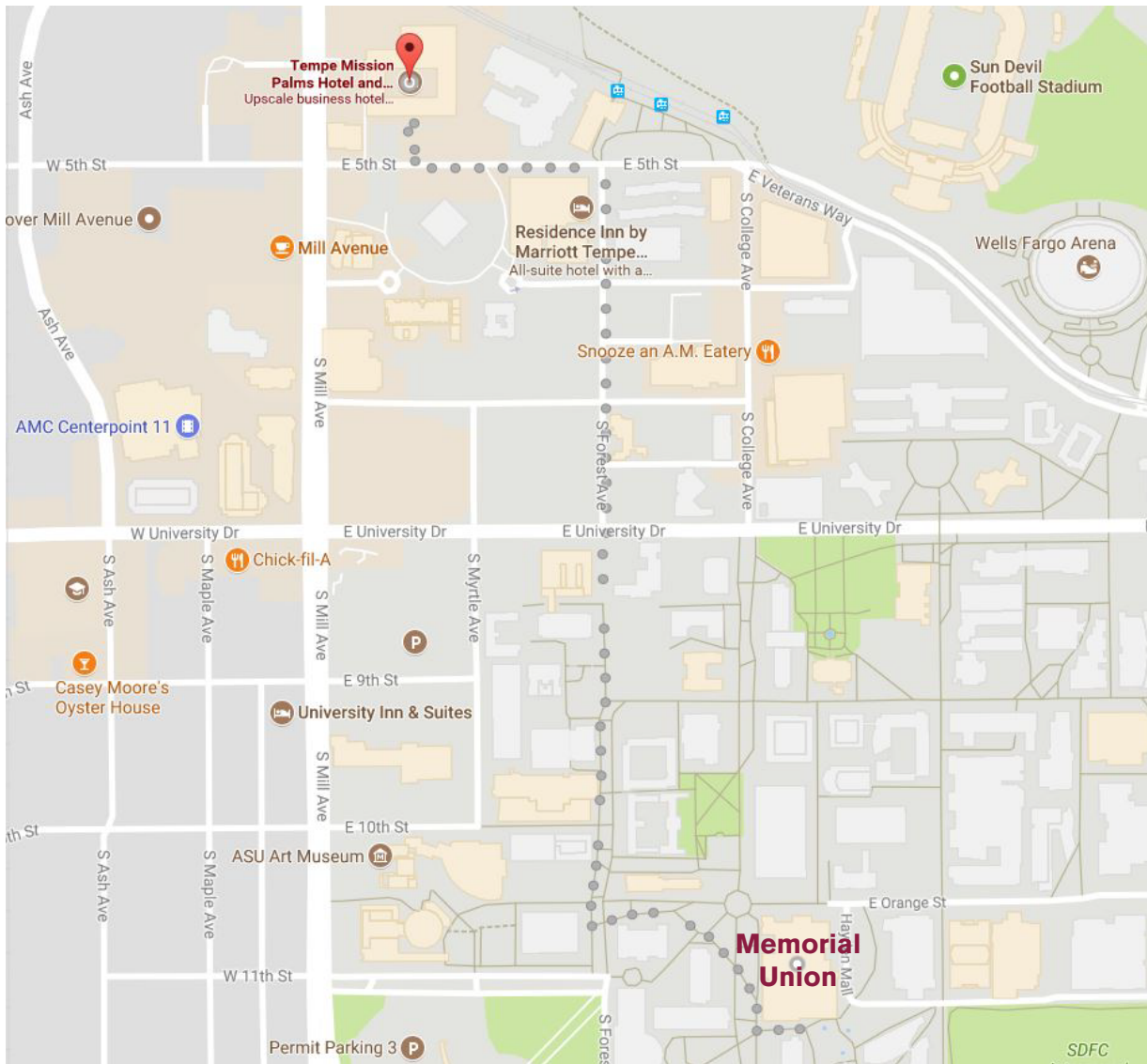
- #238 Apache**  
23'6 x 17', 399 sq. ft, seats 24 at individual tables of 6, 6' credenza
- #240 Navajo**  
23'6 x 19'6, 458 sq. ft, seats 30 at u-shape with seating on both sides, 65" wall mounted plasma screen, 6' credenza
- #241 Ventana Ballroom**  
62'6 x 109, 6842 square feet, seats 360 at rounds, 570 theatre, house sound, 4 ceiling mounted data projectors, 4 16' drop down screens, room divides into 3 sections
- #242 La Paz**  
20'6 x 43'6, 891 square feet, seats 50 at rounds, 48 at individual tables of 6, 60 theatre house sound, ceiling mounted data projector, 8 foot drop down screen, room divides into 2 equal sections
- #246 Coconino**  
20'6 x 30'6, 625 sq. ft, seats 42 at u-shape seating on both sides or theatre, 30 at rounds, ceiling mounted data projector, 8' drop down screen
- #248 Rincon**  
20'6 x 29', 248 sq. ft, seats 20 at a fixed conference table, ceiling mounted data projector, 6' drop down screen, 6' credenza

## Memorial Union Second Floor Room Features

rev. July 2010



## Map of Tempe/ASU



## Transportation

There is a complimentary shuttle between the hotel and airport (see above).

The Valley Metro includes a Light Rail system:

[http://www.valleymetro.org/planning\\_your\\_trip/system\\_map/](http://www.valleymetro.org/planning_your_trip/system_map/).

The closest stop to the Tempe Mission Palms is the Mill Avenue/3rd Street Stop.

Most Rideshare companies operate in the Valley, including Uber and Lyft.

There are a number of taxi companies as well, including Discount Cab and Yellow Cab.

## Restaurants

### Tempe (walking distance)

Café Boa | Culinary Dropout at the Yard | House of Tricks | Rula Bula | Postino  
La Bocca Urban Pizzeria + Wine Bar | Cornish Pasty (on Mill) | Zipp's

### Breakfast places within walking distance:

Snooze | NCounter | Normal Diner

### Tempe (slightly longer walk or reachable by a short cab ride)

Taste of Tops | Thai Basil (will deliver to Taste of Tops) | Four Peaks  
Café Lalibela | Cornish Pasty (on University) | Casey Moore's

### Phoenix (reachable by light rail or car)

Barrio Café Gran Reserva | The Gladly | Durant's | Chelsea's Kitchen | True Foods  
St. Francis | Bitter & Twisted | Pizzeria Bianco | Pizza Bianoc | Beckett's Table  
Crudo | Joe's Midnight Run | Windsor | Southern Rail | Arrogant Butcher

### Scottsdale (reachable by car only)

Citizen Public House | Virtu | Brat Haus | Atlas Bistro (may need a reservation)  
The Mission Old Town | AZ/88 | Barrio Queen | Hula's Modern Tiki  
Bootlegers Modern American Smoke House | The Great Australian Bakery  
Goldwater Brewing | McFate Brewing Company | Papago Brewing

## Bars/Clubs

### Tempe

Blasted Barley | Caffé Boa | Handlebar | PedalHaus

### Phoenix

Bitter & Twisted | The Blue Hound | Camp Social | The Whining Pig | Valley Bar  
Honor Amongst Thieves | Angels and Trumpets Ale House | The Vig

### Chandler/Gilbert

AZ Wilderness | San Tan Brewing Company | The Brickyard  
The Ostrich (speakeasy beneath Crust)

## Coffee near the Hotel in Tempe

Cartel Coffee Lab | Royal Coffee | Starbucks on Mill Ave  
Starbucks on campus Memorial Union